

**3M** Science.  
Applied to Life.™

**3M™ Filtek™ One**  
Bulk Fill Restorative



You choose  
it for speed.  
Now it's more  
aesthetic, too.



# You'll like that it's simple. They'll be happy that it looks good, too.

## 3M™ Filtek™ One Bulk Fill Restorative



## It's true. Now bulk fill placement can be more aesthetic.

Posterior restorations are challenging – which is why bulk fill composites that simplify and speed up the procedure have become so popular.

However, until now, the faster, easier placement of bulk fill has been at the sacrifice of aesthetics. So, as a global leader in aesthetic and restorative technologies, we went back to our experts for a solution you're sure to love:

### 3M™ Filtek™ One Bulk Fill Restorative

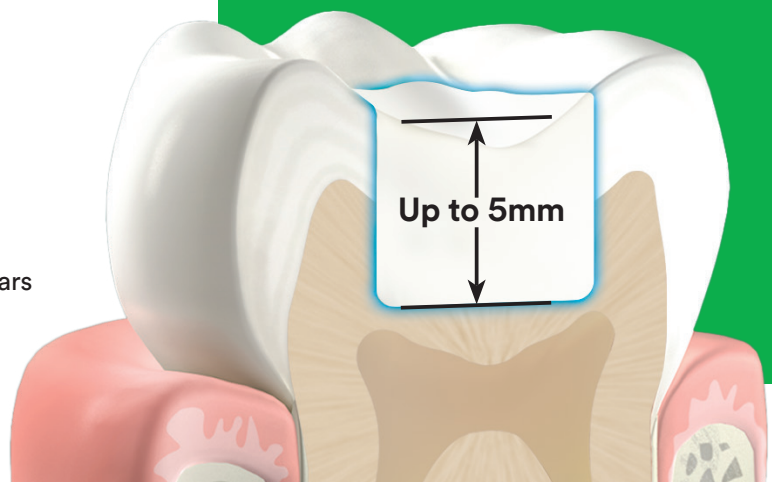
Designed for the posterior, its unique optical properties and improved opacity give you the simplicity of one-step placement – up to 5mm – *without compromising aesthetic results.*<sup>2</sup>

Now you and your patients have something to smile about.

### Indications

- ▶ Direct anterior and posterior restorations (including occlusal surfaces)
- ▶ Base/liner under direct restorations
- ▶ Core build ups
- ▶ Splinting
- ▶ Indirect restorations including inlays, onlays and veneers
- ▶ Restoration of deciduous teeth
- ▶ Extended fissure sealing in molars and pre-molars
- ▶ Repair of defects in porcelain restorations, enamel and temporaries

- ▶ Fast and easy one-step placement
- ▶ Increased opacity for improved aesthetics<sup>1</sup>
- ▶ Stress relief to enable up to 5mm depth of cure<sup>2</sup>
- ▶ Excellent adaptation<sup>3</sup>
- ▶ No need for layering or expensive dispensing devices
- ▶ Excellent handling and sculptability<sup>4</sup>
- ▶ 3M's true nanotechnology provides superior wear resistance and excellent polish retention<sup>5</sup>
- ▶ High radiopacity<sup>6</sup>
- ▶ Unique tip design for easier access to deep cavities
- ▶ Available in 5 shades



# How 3M Science enables the simplicity of one-step bulk placement with improved aesthetics.

The technologies behind 3M™ Filtek™ One Bulk Fill Restorative

## New! Smart contrast ratio management

### Increases opacity without sacrificing depth of cure

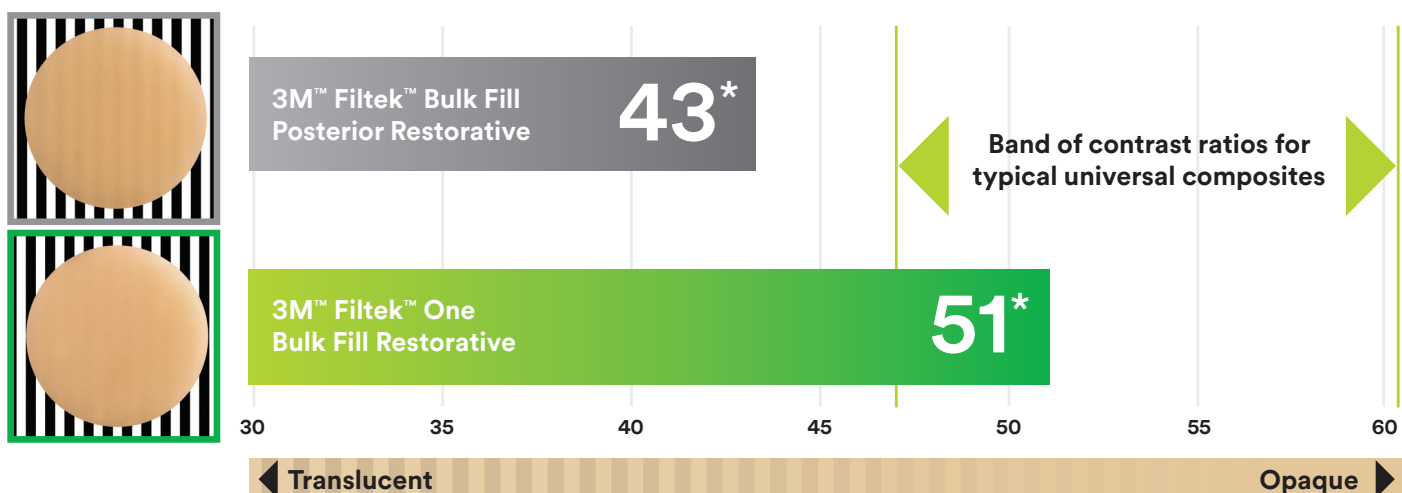
Further development of 3M nanotechnology allows us to manage opacity and depth of cure in a smarter way. With our unique Smart Contrast Ratio Management technology, we've increased opacity without reducing depth of cure.<sup>8</sup>

In its cured state, Filtek One Bulk Fill restorative has a higher opacity than 3M™ Filtek™ Bulk Fill Posterior Restorative, resulting in improved aesthetics.<sup>8</sup>

## Did you know?

Contrast ratio is the measurement of the translucency or opacity of the material.

### Contrast ratio

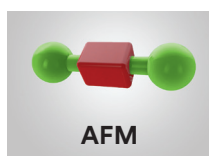


3M Oral Care Internal Data. Claim 6810, 2016.

\*The contrast ratio is the average of all shades.

### Innovative AUDMA and AFM monomers

Reduces shrinkage and relieves stress to allow bulk fill placement up to 5mm.<sup>2</sup>



Addition-fragmentation monomer (AFM) relieves stress during polymerisation.<sup>9</sup>

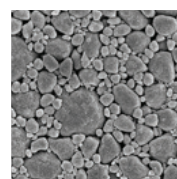


Aromatic urethane dimethacrylate (AUDMA) helps reduce the amount of shrinkage and stress that occurs during polymerisation.<sup>9</sup>

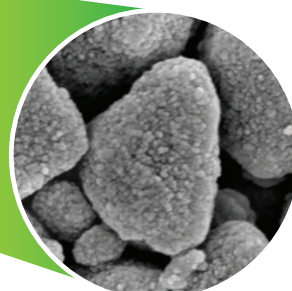
### 3M's true nanofiller technology

Provides superior wear resistance and excellent polish retention.<sup>5</sup>

5K magnification of nanocluster



50K magnification of nanocluster



# Simplify your entire posterior restorative procedure.



## 3M™ Scotchbond™ Universal Adhesive

Versatile.<sup>12</sup> High bond strength.<sup>13</sup> One simple technique and quick 35 second application.<sup>14</sup> Virtually no post-operative sensitivity.<sup>15</sup>



## 3M™ Elipar™ DeepCure-S LED Curing Light

Predictable, reliable cure.<sup>16</sup> Optimised light guide is more comfortable for patients and provides easier access to posterior teeth.<sup>17</sup>



## 3M™ Sof-Lex™ Diamond Polishing System

Easily adapts to irregular, convex and concave tooth surfaces<sup>10</sup> and imparts paste-like gloss with the convenience of a rubberised system.<sup>11</sup> Fast and easy to use.

### Ordering information



#### 3M™ Filtek™ One Bulk Fill Restorative

Shade	Syringe	Capsule
A1	4866A1	4867A1
A2	4866A2	4867A2
A3	4866A3	4867A3
B1	4866B1	4867B1
C2	4866C2	4867C2

#### Syringe shade refills include:

1 – 4g syringe; Technique guide; Instructions for use.

#### Capsule shade refills include:

20 – 0.2g capsules; Technique guide; Instructions for use.



#### 3M™ Scotchbond™ Universal Adhesive

Item # Product information

**41254 3M™ Scotchbond™ Universal Adhesive Intro Kit – Vial**  
1 – 5ml adhesive vial; 50 disposable mixing wells; 50 disposable microbrushes; 1 – 3ml etchant syringe

**41258 3M™ Scotchbond™ Universal Adhesive Refill** Includes: 1 – 5ml adhesive vial

**41255 3M™ Scotchbond™ Universal Adhesive Intro Kit – Unit Dose 40**  
40 unit dose; 1 – 3ml etchant syringe



#### 3M™ Elipar™ DeepCure-S LED Curing Light

Item # Product information

**76976 3M™ Elipar™ DeepCure-S LED Curing Light Handpiece** (cordless), Charging base (230V); Li-ion battery; 10mm Light guide; Eye shield



#### 3M™ Sof-Lex™ Diamond Polishing System

Item # Product information

**5092-IM 3M™ Sof-Lex™ Diamond Polishing System – Introductory kit**  
5 – 3M™ Sof-Lex™ Pre-Polishing Spirals (Beige); 5 – 3M™ Sof-Lex™ Diamond Polishing Spirals (Pink); 1 – 3M™ Sof-Lex™ RA Mandrel; Instructions for use; Technique card

**5090 3M™ Sof-Lex™ Pre-Polishing Spirals – Refill** 15 Sof-Lex Pre-Polishing Spirals (Beige)

**5091 3M™ Sof-Lex™ Diamond Polishing Spirals – Refill** 15 Sof-Lex Diamond Polishing Spirals (Pink)

#### References

- 3M Oral Care Internal Data. Increased opacity for improved aesthetics. Claim 6810, 2016
- 3M Oral Care Internal Data. 5mm depth of cure. Claim 6822, 2016
- 3M Oral Care Internal Data. Easy adaption to cavity and margins. Claim 6763, 2016
- 3M Oral Care Internal Data. Excellent adaption and ability to sculpt. Claim 6778, 2016
- 3M Oral Care Internal Data. Nanotechnology; durability, polishability and polish retention. Claim 6809, 2016
- 3M Oral Care Internal Data. High radiopacity. Claim 6871, 2016
- 3M Oral Care Internal Data. Tip design for easy access deep in the cavity. Claim 6767, 2016
- 3M Oral Care Internal Data. Increased opacity for improved aesthetics. Claim 6810, 2016
- 3M Oral Care Internal Data. AFM and AUDMA lower polymerisation stress. Claim 6831, 2016
- 3M Oral Care internal data. Adapts to all surfaces. Claim number 6524
- 3M Oral Care internal data. Imparts a paste-like gloss. Claim number 6549
- 3M Oral Care internal data. Scotchbond Universal is versatile. Claim number 5794
- 3M Oral Care internal data. High bond strength. Claim number 5284
- 3M Oral Care Internal Data. 35 second application. Claim 5124
- 3M Oral Care Internal Data. Virtually no post-operative sensitivity. Claim 4830
- 3M Oral Care internal data. Predictable, reliable cure. Claim number 6288
- 3M Oral Care internal data. Elipar DeepCure curing light is comfortable for the patient. Claim number 6296

3M Oral Care  
3M United Kingdom PLC  
Charnwood Campus  
10 Bakewell Road  
Loughborough  
Leicestershire LE11 5RB  
0845 602 5094

3M Ireland Ltd  
The Iveagh Building  
The Park  
Carrickmines  
Dublin 18  
Ireland  
00 353 (01) 280 3555

[www.3M.co.uk](http://www.3M.co.uk)

GD607.  
J364950.  
3M, Scotchbond, Elipar, Sof-Lex and Filtek are trademarks of the 3M company. © 3M 2018. All rights reserved.

